

CONSOLIDATED TEST RESULTS SUMMARY

Please see the following pages for full test results.

BULK SKU TN.O.FS.SL50

BATCH # EE41

PRODUCT NAME Strawberry Lemonade Tincture

SERVING SIZE 1 mL

LABORATORY: Columbia Laboratories

OREGON ACCREDITATION: OR100028

LOQ: Limit Of Quantitation

LOD: Limit Of Detection

1 g = 10⁻³ kg = 10³ mg = 10⁶

µg 1 mg/kg = 1 ppm = 1000 ppb

POTENCY	PER SERVING	PER GRAM	Percent
Cannabidiol (CBD)	50.73 mg/serving	53.40 mg/g	5.34 %
Total THC (d9-THC, THCA)	1.84 mg/serving	1.94 mg/g	0.19 %
Cannabigerol (CBG)	1.11 mg/serving	1.17 mg/g	0.12 %
Cannabinol (CBN)	0.05 mg/serving	0.06 mg/g	0.01 %
Cannabichromene (CBC)	1.83 mg/serving	1.93 mg/g	0.19 %
Tetrahydrocannabinolic Acid (THCA)	<LOQ mg/serving	<LOQ mg/g	<LOQ %
Delta-9-THC (d9-THC)	1.84 mg/serving	1.94 mg/g	0.19 %
Delta-8-THC (d8-THC)	<LOQ mg/serving	<LOQ mg/g	<LOQ %

HEAVY METALS	PER SERVING	PER GRAM	REGULATORY ACTION LEVEL
Arsenic	<LOQ µg/serving	<LOQ µg/g	10 µg/day ^[1]
Cadmium	<LOQ µg/serving	<LOQ µg/g	4.1 µg/day ^[1]
Lead	<LOQ µg/serving	<LOQ µg/g	3.5 µg/day ^[2]
Mercury	<LOQ µg/serving	<LOQ µg/g	2 µg/day ^[1]

PESTICIDES	REGULATORY ACTION LEVEL
None of the other 59 pesticides tested found above limit of detection in the sample.	10 ppb ^[1]

RESIDUAL SOLVENTS	Results	REGULATORY ACTION LEVEL
Ethanol	5200	50,000 mg/day
Heptane	<LOQ	50,000 mg/day
None of the 34 residual solvents tested found above limit of quantitation in the sample.		

MICROBIAL	PASS/FAIL
Yeast & Mold	Pass
Coliform	Pass

TERPENES	% OF SAMPLE
Farnesene	<LOQ %
β-Caryophyllene	0.111 %
α-Bisabolol	0.0763 %
Guaiol	0.0252 %
Humulene	0.0543 %
Caryophyllene Oxide	0.0355 %



1. American Herbal Pharmacopoeia. (2014). Cannabis Inflorescence: Standards of Identity, Analysis, and Quality Control. Washington DC: AHP.

2. US Food and Drug Administration. (2019). Lead in Food, Foodwares, and Dietary Supplements. Washington DC: FDA. US Food and Drug Administration. (2019). Lead in Food, Foodwares, and Dietary Supplements. Washington DC: FDA.



12423 NE Whitaker Way
Portland, OR 97230
503-254-1794



Report Number: 22-006362/D004.R000
Report Date: 06/14/2022
ORELAP#: OR100028
Purchase Order:
Received: 06/01/22 16:49

Customer: Etz Hayim Holdings
Product identity: FORM-EE41-TN.O.FS.SL50
Client/Metric ID: .
Laboratory ID: 22-006362-0001

Summary

Potency:

Analyte per 1g	Result	Limits	Units	Status	
CBC per 1g [†]	1.93		mg/1g		CBD-Total per 1g 53.4 mg/1g
CBD per 1g	53.4		mg/1g		
CBDV per 1g [†]	0.236		mg/1g		THC-Total per 1g 1.94 mg/1g
CBG per 1g [†]	1.17		mg/1g		(Reported in milligrams per serving)
CBN per 1g	0.0561		mg/1g		
CBT per 1g [†]	1.39		mg/1g		
Δ9-THC per 1g	1.94		mg/1g		

Residual Solvents:

Analyte	Result (µg/g)	Limits (µg/g)	Status
Ethanol [†]	5200		

Pesticides:

All analytes passing and less than LOQ.

Terpenes:

Analyte	Percent by weight	Percent of Total	Analyte	Percent by weight	Percent of Total
β-Caryophyllene [†]	0.111	32.84%	α-Bisabolol [†]	0.0763	22.57%
Humulene [†]	0.0543	16.07%	(-)-caryophyllene oxide [†]	0.0355	10.50%
(R)-(+)-Limonene [†]	0.0354	10.47%	(-)-Guaiol [†]	0.0252	7.46%
Total Terpenes[†]	0.338	100.00%			

Metals:

Less than LOQ for all analytes.

Microbiology:

Less than LOQ for all analytes.



12423 NE Whitaker Way
 Portland, OR 97230
 503-254-1794



Report Number: 22-006362/D004.R000
Report Date: 06/14/2022
ORELAP#: OR100028
Purchase Order:
Received: 06/01/22 16:49

Customer: Etz Hayim Holdings
 16427 NE Airport Way
 PORTLAND 97230
 United States of America (USA)

Product identity: FORM-EE41-TN.O.FS.SL50

Client/Metric ID: .

Sample Date:

Laboratory ID: 22-006362-0001

Evidence of Cooling: No

Temp: 29.8 °C

Relinquished by: Client

Serving Size #1: 1 g

Sample Results

Potency per 1g					
Method J AOAC 2015 V98-6 (mod)Units mg/se Batch: 2204768 Analyze: 6/6/22 10:12:00 AM					
Analyte	Result	Limits	Units	LOQ	Notes
CBC per 1g [†]	1.93		mg/1g	0.0328	
CBC-A per 1g [†]	< LOQ		mg/1g	0.0328	
CBC-Total per 1g [†]	1.93		mg/1g	0.0616	
CBD per 1g	53.4		mg/1g	0.328	
CBD-A per 1g	< LOQ		mg/1g	0.0328	
CBD-Total per 1g	53.4		mg/1g	0.357	
CBDV per 1g [†]	0.236		mg/1g	0.0328	
CBDV-A per 1g [†]	< LOQ		mg/1g	0.0328	
CBDV-Total per 1g [†]	0.236		mg/1g	0.0613	
CBE per 1g [†]	< LOQ		mg/1g	0.0328	
CBG per 1g [†]	1.17		mg/1g	0.0328	
CBG-A per 1g [†]	< LOQ		mg/1g	0.0328	
CBG-Total per 1g [†]	1.17		mg/1g	0.0613	
CBL per 1g [†]	< LOQ		mg/1g	0.0328	
CBL-A per 1g [†]	< LOQ		mg/1g	0.0328	
CBL-Total per 1g [†]	< LOQ		mg/1g	0.0616	
CBN per 1g	0.0561		mg/1g	0.0328	
CBT per 1g [†]	1.39		mg/1g	0.0328	
Δ8-THCV per 1g [†]	< LOQ		mg/1g	0.0328	
Δ8-THC per 1g [†]	< LOQ		mg/1g	0.0328	
Δ9-THC per 1g	1.94		mg/1g	0.0328	
exo-THC per 1g [†]	< LOQ		mg/1g	0.0328	
THC-A per 1g	< LOQ		mg/1g	0.0328	
THC-Total per 1g	1.94		mg/1g	0.0616	
THCV per 1g [†]	< LOQ		mg/1g	0.0328	
THCV-A per 1g [†]	< LOQ		mg/1g	0.0328	
THCV-Total per 1g [†]	< LOQ		mg/1g	0.0617	
Total Cannabinoids per 1g	60.1		mg/1g		



12423 NE Whitaker Way
 Portland, OR 97230
 503-254-1794



Report Number: 22-006362/D004.R000
Report Date: 06/14/2022
ORELAP#: OR100028
Purchase Order:
Received: 06/01/22 16:49

Microbiology

Analyte	Result	Limits	Units	LOQ	Batch	Analyze	Method	Status	Notes
E.coli	< LOQ		cfu/g	10	2204846	06/10/22	AOAC 991.14 (Petrifilm)	X, I	
Total Coliforms	< LOQ		cfu/g	10	2204846	06/10/22	AOAC 991.14 (Petrifilm)	X, I	
Mold (RAPID Petrifilm)	< LOQ		cfu/g	10	2204847	06/11/22	AOAC 2014.05 (RAPID)	X, I	
Yeast (RAPID Petrifilm)	< LOQ		cfu/g	10	2204847	06/11/22	AOAC 2014.05 (RAPID)	X, I	

Solvents Method Residual Solvents by GC/MS Units µg/g Batch 2204986 Analyze 06/13/22 09:45 AM

Analyte	Result	Limits	LOQ	Status	Notes	Analyte	Result	Limits	LOQ	Status	Notes
1,4-Dioxane	< LOQ	380	100	pass		2-Butanol	< LOQ	5000	200	pass	
2-Ethoxyethanol	< LOQ	160	30.0	pass		2-Methylbutane (Isopentane)	< LOQ		200		
2-Methylpentane	< LOQ		30.0			2-Propanol (IPA)	< LOQ	5000	200	pass	
2,2-Dimethyl butane	< LOQ		30.0			2,2-Dimethylpropane (neo-pentane)	< LOQ		200		
2,3-Dimethyl butane	< LOQ		30.0			3-Methylpentane	< LOQ		30.0		
Acetone	< LOQ	5000	200	pass		Acetonitrile	< LOQ	410	100	pass	
Benzene	< LOQ	2.00	1.00	pass		Butanes (sum)	< LOQ	5000	400	pass	
Cyclohexane	< LOQ	3880	200	pass		Ethanol ^l	5200		200		E
Ethyl acetate	< LOQ	5000	200	pass		Ethyl benzene	< LOQ		200		
Ethyl ether	< LOQ	5000	200	pass		Ethylene glycol	< LOQ	620	200	pass	
Ethylene oxide	< LOQ	50.0	20.0	pass		Hexanes (sum)	< LOQ	290	150	pass	
Isopropyl acetate	< LOQ	5000	200	pass		Isopropylbenzene (Cumene)	< LOQ	70.0	30.0	pass	
m,p-Xylene	< LOQ		200			Methanol	< LOQ	3000	200	pass	
Methylene chloride	< LOQ	600	60.0	pass		Methylpropane (Isobutane)	< LOQ		200		
n-Butane	< LOQ		200			n-Heptane	< LOQ	5000	200	pass	
n-Hexane	< LOQ		30.0			n-Pentane	< LOQ		200		
o-Xylene	< LOQ		200			Pentanes (sum)	< LOQ	5000	600	pass	
Propane	< LOQ	5000	200	pass		Tetrahydrofuran	< LOQ	720	100	pass	
Toluene	< LOQ	890	100	pass		Total Xylenes	< LOQ		400		
Total Xylenes and Ethyl benzene	< LOQ	2170	600	pass							



12423 NE Whitaker Way
Portland, OR 97230
503-254-1794

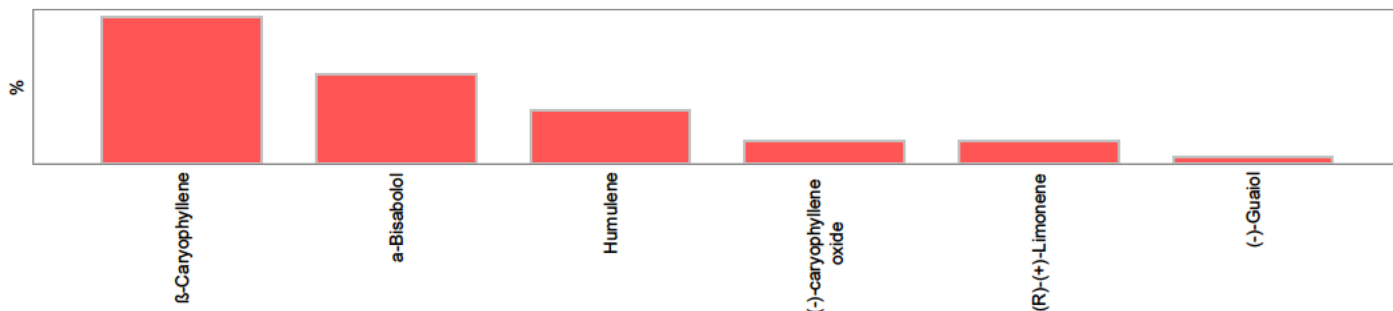


Report Number: 22-006362/D004.R000
Report Date: 06/14/2022
ORELAP#: OR100028
Purchase Order:
Received: 06/01/22 16:49

Pesticides											
Method AOAC 2007.01 & EN 15662 (mod) Units mg/kg Batch 2204951 Analyze 06/10/22 08:15 AM											
Analyte	Result	Limits	LOQ	Status	Notes	Analyte	Result	Limits	LOQ	Status	Notes
Abamectin	< LOQ	0.50	0.250	pass		Acephate	< LOQ	0.40	0.250	pass	
Acequinocyl	< LOQ	2.0	1.00	pass		Acetamiprid	< LOQ	0.20	0.100	pass	
Aldicarb	< LOQ	0.40	0.200	pass		Azoxystrobin	< LOQ	0.20	0.100	pass	
Bifenazate	< LOQ	0.20	0.100	pass		Bifenthrin	< LOQ	0.20	0.100	pass	
Boscalid	< LOQ	0.40	0.200	pass		Carbaryl	< LOQ	0.20	0.100	pass	
Carbofuran	< LOQ	0.20	0.100	pass		Chlorantraniliprole	< LOQ	0.20	0.100	pass	
Chlorfenapyr	< LOQ	1.0	0.500	pass		Chlorpyrifos	< LOQ	0.20	0.100	pass	
Clofentezine	< LOQ	0.20	0.100	pass		Cyfluthrin	< LOQ	1.0	0.500	pass	
Cypermethrin	< LOQ	1.0	0.500	pass		Daminozide	< LOQ	1.0	0.500	pass	
Diazinon	< LOQ	0.20	0.100	pass		Dichlorvos	< LOQ	1.0	0.500	pass	
Dimethoate	< LOQ	0.20	0.100	pass		Ethoprophos	< LOQ	0.20	0.100	pass	
Etofenprox	< LOQ	0.40	0.200	pass		Etoazole	< LOQ	0.20	0.100	pass	
Fenoxycarb	< LOQ	0.20	0.100	pass		Fenpyroximate	< LOQ	0.40	0.200	pass	
Fipronil	< LOQ	0.40	0.200	pass		Fonicamid	< LOQ	1.0	0.400	pass	
Fludioxonil	< LOQ	0.40	0.200	pass		Hexythiazox	< LOQ	1.0	0.400	pass	
Imazalil	< LOQ	0.20	0.100	pass		Imidacloprid	< LOQ	0.40	0.200	pass	
Kresoxim-methyl	< LOQ	0.40	0.200	pass		Malathion	< LOQ	0.20	0.100	pass	
Metalaxyl	< LOQ	0.20	0.100	pass		Methiocarb	< LOQ	0.20	0.100	pass	
Methomyl	< LOQ	0.40	0.200	pass		MGK-264	< LOQ	0.20	0.100	pass	
Myclobutanil	< LOQ	0.20	0.100	pass		Naled	< LOQ	0.50	0.250	pass	
Oxamyl	< LOQ	1.0	0.500	pass		Paclotrazole	< LOQ	0.40	0.200	pass	
Parathion-Methyl	< LOQ	0.20	0.200	pass		Permethrin	< LOQ	0.20	0.100	pass	
Phosmet	< LOQ	0.20	0.100	pass		Piperonyl butoxide	< LOQ	2.0	1.00	pass	
Prallethrin	< LOQ	0.20	0.200	pass		Propiconazole	< LOQ	0.40	0.200	pass	
Propoxur	< LOQ	0.20	0.100	pass		Pyrethrin I (total)	< LOQ	1.0	0.500	pass	
Pyridaben	< LOQ	0.20	0.100	pass		Spinosad	< LOQ	0.20	0.100	pass	
Spiromesifen	< LOQ	0.20	0.100	pass		Spirotetramat	< LOQ	0.20	0.100	pass	
Spiroxamine	< LOQ	0.40	0.200	pass		Tebuconazole	< LOQ	0.40	0.200	pass	
Thiacloprid	< LOQ	0.20	0.100	pass		Thiamethoxam	< LOQ	0.20	0.100	pass	
Trifloxystrobin	< LOQ	0.20	0.100	pass							



Terpenes				Method J AOAC 2015 V98-6	Units %	Batch 2205013	Analyze 06/11/22 05:26 AM		
Analyte	Result	LOQ	% of Total	Notes	Analyte	Result	LOQ	% of Total	Notes
β-Caryophyllene†	0.111	0.020	32.840%		α-Bisabolol†	0.0763	0.020	22.5740%	
Humulene†	0.0543	0.020	16.0651%		(-)-caryophyllene oxide†	0.0355	0.020	10.5030%	
(R)-(+)-Limonene†	0.0354	0.020	10.4734%		(-)-Guaiol†	0.0252	0.020	7.4556%	
Terpinolene†	< LOQ	0.020	0.00%		Sabinene†	< LOQ	0.020	0.00%	
(+)-Cedrol†	< LOQ	0.020	0.00%		β-Myrcene†	< LOQ	0.020	0.00%	
(±)-fenchone†	< LOQ	0.020	0.00%		Geraniol†	< LOQ	0.020	0.00%	
trans-β-Ocimene†	< LOQ	0.013	0.00%		(+)-Borneol†	< LOQ	0.020	0.00%	
(-)-β-Pinene†	< LOQ	0.020	0.00%		Menthol†	< LOQ	0.020	0.00%	
(-)-α-Terpineol†	< LOQ	0.020	0.00%		(+)-fenchol†	< LOQ	0.020	0.00%	
(±)-trans-Nerolidol†	< LOQ	0.020	0.00%		nerol†	< LOQ	0.020	0.00%	
(±)-Camphor†	< LOQ	0.020	0.00%		gamma-Terpinene†	< LOQ	0.020	0.00%	
Sabinene hydrate†	< LOQ	0.020	0.00%		(+)-Pulegone†	< LOQ	0.020	0.00%	
Geranyl acetate†	< LOQ	0.020	0.00%		(-)-Isopulegol†	< LOQ	0.020	0.00%	
(±)-cis-Nerolidol†	< LOQ	0.020	0.00%		α-cedrene†	< LOQ	0.020	0.00%	
α-phellandrene†	< LOQ	0.020	0.00%		α-pinene†	< LOQ	0.020	0.00%	
α-Terpinene†	< LOQ	0.020	0.00%		Camphene†	< LOQ	0.020	0.00%	
cis-β-Ocimene†	< LOQ	0.006	0.00%		d-3-Carene†	< LOQ	0.020	0.00%	
Eucalyptol†	< LOQ	0.020	0.00%		farnesene†	< LOQ	0.020	0.00%	
Isoborneol†	< LOQ	0.020	0.00%		Linalool†	< LOQ	0.020	0.00%	
p-Cymene†	< LOQ	0.020	0.00%		valencene†	< LOQ	0.020	0.00%	
Total Terpenes	0.338								



Metals									
Analyte	Result	Limits	Units	LOQ	Batch	Analyze	Method	Status	Notes
Arsenic	< LOQ	0.200	mg/kg	0.0911	2204943	06/09/22	AOAC 2013.06 (mod.)	pass	X
Cadmium	< LOQ	0.200	mg/kg	0.0911	2204943	06/09/22	AOAC 2013.06 (mod.)	pass	X
Lead	< LOQ	0.500	mg/kg	0.0911	2204943	06/09/22	AOAC 2013.06 (mod.)	pass	X
Mercury	< LOQ	0.100	mg/kg	0.0456	2204943	06/09/22	AOAC 2013.06 (mod.)	pass	X



12423 NE Whitaker Way
Portland, OR 97230
503-254-1794



Report Number: 22-006362/D004.R000
Report Date: 06/14/2022
ORELAP#: OR100028
Purchase Order:
Received: 06/01/22 16:49

These test results are representative of the individual sample selected and submitted by the client.

Abbreviations

Limits: Action Levels per OAR-333-007-0400, OAR-333-007-0210, OAR-333-007-0220, CCR title 16-division 42. BCC-section 5723

Limit(s) of Quantitation (LOQ): The minimum levels, concentrations, or quantities of a target variable (e.g., target analyte) that can be reported with a specified degree of confidence.

† = Analyte not NELAP accredited.

Units of Measure

cfu/g = Colony forming units per gram

g = g

µg/g = Microgram per gram

mg/kg = Milligram per kilogram = parts per million (ppm)

mg/1g = Milligram per 1g

% = Percentage of sample

% wt = µg/g divided by 10,000

Glossary of Qualifiers

E: Analyte concentration exceeds the calibration range, results are estimated.

I: Insufficient sample received to meet method requirements.

X: Not ORELAP accredited.

Approved Signatory

Derrick Tanner
General Manager



12423 NE Whitaker Way
Portland, OR 97230
503-254-1794



Report Number: 22-006362/D004.R000
Report Date: 06/14/2022
ORELAP#: OR100028
Purchase Order:
Received: 06/01/22 16:49

12423 NE Whitaker Way Portland OR 97230 p.503-254-1794

Cannabis Chain of Custody Record



ORELAP ID: OR100028

Field ID		Date/Time Collected	Pesticides - OR 59 compounds	Pesticide Multi-Residue - 379 compounds	Potency	Residual Solvents	Water Activity	Moisture	Terpenes	Micro: Yeast and Mold	Micro: E. Coli and Total Coliform	Heavy Metals	Mycotoxins	Other:	Matrix	Weight	Serving size for edibles	Comments/Metric ID
Form-EE41-TN.D.F.S.S.L.S.D		5/31 2:15 p			X										Liquid TN		mg/g	La Z. Nat
Form-EE41-TN.D.F.S.S.L.S.D		5/31 2:15 p	X			X			X	X	X	X			"	"	"	Discant
																		Potency 1st

Purchase Order Number:
Project Number:
Project Name:
 Report Instructions:
 Send to State - METRC
 Email Final Results:
 Fax Final Results
 Cash/Check/CC/Net 30
Other:

Collected By:
 Standard (5 day)
 Rush (3-4 day) (1.5x Standard)
 Priority Rush (2 day) (2x Standard)



Lab Use Only:
Client Alias:
Order Number:
Proper Container
Sample Condition
Temperature: 25.9°C
Shipped Via: Client
Evidence of cooling: Yes No

SUBMISSION OF SAMPLES WITH TESTING REQUIREMENTS TO PIXIS WILL BE UNDERSTOOD TO BE AN AGREEMENT FOR SERVICES IN ACCORDANCE WITH THE CONDITIONS LISTED ON THE BACK OF THIS FORM
Revision: 1.02 Control#: CF023
Effective 01/31/2019 Revised 01/31/2019
www.pixislabs.com

Test results relate only to the parameters tested and to the samples as received by the laboratory. Test results meet all requirements of NELAP and the Columbia Laboratories quality assurance plan unless otherwise noted. This report shall not be reproduced, except in full, without the written consent of this laboratory. Samples will be retained for a maximum of 30 days from the receipt date unless prior arrangements have been made.
Testing in accordance with: OAR 333-007-0390 OAR 333-007-0400 OAR 333-007-0410 OAR 333-007-0430



12423 NE Whitaker Way
Portland, OR 97230
503-254-1794



Report Number: 22-006362/D004.R000
Report Date: 06/14/2022
ORELAP#: OR100028
Purchase Order:
Received: 06/01/22 16:49

Revision: 1 Document D: 7148
Legacy ID: Worksheet Validated 04/20/2021

Laboratory Quality Control Results

JAOAC2015 V98-6 Batch ID 2204768

Analyte	LCS	Result	Spike	Units	% Rec	Limits	Evaluation	Notes
CBDVA	1	0.0318	0.033	%	95.5	80.0 - 120	Acceptable	
CBDV	1	0.0351	0.033	%	105	80.0 - 120	Acceptable	
CBE	1	0.0302	0.033	%	90.5	80.0 - 120	Acceptable	
CBDA	1	0.0320	0.033	%	96.0	90.0 - 110	Acceptable	
CBGA	1	0.0296	0.033	%	88.8	80.0 - 120	Acceptable	
CBG	1	0.0301	0.033	%	90.3	80.0 - 120	Acceptable	
CBD	1	0.0321	0.033	%	96.3	90.0 - 110	Acceptable	
THCV	1	0.0307	0.033	%	92.2	80.0 - 120	Acceptable	
d8THCV	1	0.0322	0.033	%	96.6	80.0 - 120	Acceptable	
THCV/A	1	0.0291	0.033	%	87.3	80.0 - 120	Acceptable	
CBN	1	0.0333	0.033	%	99.9	90.0 - 110	Acceptable	
exo-THC	1	0.0301	0.033	%	90.4	80.0 - 120	Acceptable	
d9THC	1	0.0307	0.033	%	92.2	90.0 - 110	Acceptable	
d8THC	1	0.0314	0.033	%	94.3	80.0 - 120	Acceptable	
CBL	1	0.0285	0.033	%	85.5	80.0 - 120	Acceptable	
CBC	1	0.0330	0.033	%	99.0	80.0 - 120	Acceptable	
THCA	1	0.0311	0.033	%	93.3	90.0 - 110	Acceptable	
CBCA	1	0.0328	0.033	%	98.4	80.0 - 120	Acceptable	
CBLA	1	0.0326	0.033	%	97.8	80.0 - 120	Acceptable	
CBT	1	0.0315	0.033	%	94.6	80.0 - 120	Acceptable	

Method Blank

Analyte	Result	LOQ	Units	Limits	Evaluation	Notes
CBDVA	<LOQ	0.003	%	< 0.003	Acceptable	
CBDV	<LOQ	0.003	%	< 0.003	Acceptable	
CBE	<LOQ	0.003	%	< 0.003	Acceptable	
CBDA	<LOQ	0.003	%	< 0.003	Acceptable	
CBGA	<LOQ	0.003	%	< 0.003	Acceptable	
CBG	<LOQ	0.003	%	< 0.003	Acceptable	
CBD	<LOQ	0.003	%	< 0.003	Acceptable	
THCV	<LOQ	0.003	%	< 0.003	Acceptable	
d8THCV	<LOQ	0.003	%	< 0.003	Acceptable	
THCV/A	<LOQ	0.003	%	< 0.003	Acceptable	
CBN	<LOQ	0.003	%	< 0.003	Acceptable	
exo-THC	<LOQ	0.003	%	< 0.003	Acceptable	
d9THC	<LOQ	0.003	%	< 0.003	Acceptable	
d8THC	<LOQ	0.003	%	< 0.003	Acceptable	
CBL	<LOQ	0.003	%	< 0.003	Acceptable	
CBC	<LOQ	0.003	%	< 0.003	Acceptable	
THCA	<LOQ	0.003	%	< 0.003	Acceptable	
CBCA	<LOQ	0.003	%	< 0.003	Acceptable	
CBLA	<LOQ	0.003	%	< 0.003	Acceptable	
CBT	<LOQ	0.003	%	< 0.003	Acceptable	

Abbreviations

ND - None Detected at or above MRL
RPD - Relative Percent Difference
LOQ - Limit of Quantitation

Units of Measure:

% - Percent



12423 NE Whitaker Way
Portland, OR 97230
503-254-1794



Report Number: 22-006362/D004.R000
Report Date: 06/14/2022
ORELAP#: OR100028
Purchase Order:
Received: 06/01/22 16:49

Revision: 1 Document D: 7148
Legacy ID: Worksheet Validated 04/20/2021

Laboratory Quality Control Results

JAOAC2015 V98-6		Batch ID: 2204768						
Sample Duplicate		Sample ID: 22-006362-0001						
Analyte	Result	Org. Result	LOQ	Units	RPD	Limits	Evaluation	Notes
CBDVA	<LOQ	<LOQ	0.003	%	NA	< 20	Acceptable	
CBDV	0.0236	0.0236	0.003	%	0.146	< 20	Acceptable	
CBE	<LOQ	<LOQ	0.003	%	NA	< 20	Acceptable	
CBDA	<LOQ	<LOQ	0.003	%	NA	< 20	Acceptable	
CBGA	<LOQ	<LOQ	0.003	%	NA	< 20	Acceptable	
CBG	0.116	0.117	0.003	%	0.528	< 20	Acceptable	
CBD	5.36	5.34	0.003	%	0.343	< 20	Acceptable	
THCV	<LOQ	<LOQ	0.003	%	NA	< 20	Acceptable	
d8THCV	<LOQ	<LOQ	0.003	%	NA	< 20	Acceptable	
THCVA	<LOQ	<LOQ	0.003	%	NA	< 20	Acceptable	
CBN	0.0055	0.0056	0.003	%	1.79	< 20	Acceptable	
exo-THC	<LOQ	<LOQ	0.003	%	NA	< 20	Acceptable	
d9THC	0.193	0.194	0.003	%	0.494	< 20	Acceptable	
d8THC	<LOQ	<LOQ	0.003	%	NA	< 20	Acceptable	
CBL	<LOQ	<LOQ	0.003	%	NA	< 20	Acceptable	
CB	0.193	0.193	0.003	%	0.121	< 20	Acceptable	
THCA	<LOQ	<LOQ	0.003	%	NA	< 20	Acceptable	
CBCA	<LOQ	<LOQ	0.003	%	NA	< 20	Acceptable	
CBLA	<LOQ	<LOQ	0.003	%	NA	< 20	Acceptable	
CBT	0.136	0.139	0.003	%	2.03	< 20	Acceptable	

Abbreviations

- ND - None Detected at or above MRL
- RPD - Relative Percent Difference
- LOQ - Limit of Quantitation

Units of Measure:



12423 NE Whitaker Way
Portland, OR 97230
503-254-1794



Report Number: 22-006362/D004.R000
Report Date: 06/14/2022
ORELAP#: OR100028
Purchase Order:
Received: 06/01/22 16:49

Revision: 3 Document ID: 3120
LegacyID: CFLC21WorksheetValidated 10/30/2020

Laboratory Pesticide Quality Control Results

AOAC2007.1 &EN 15662		Units: mg/Kg			Batch ID 2204951			
Method Blank		Laboratory Control Sample						
Analyte	Blank Result	Blank Limits	Notes	LCS Result	LCS Spk	LCS % Re	Limits	Notes
Abamectin	0.00	< 0.250		0.907	1.000	90.7	50.0	150
Acephate	0.00	< 0.250		0.958	1.000	95.8	60.0	120
Acetamiprid	0.00	< 1.000		4.061	4.000	101.5	40.0	160
Acetamiprid	0.00	< 0.100		0.387	0.400	96.6	60.0	120
Aldicarb	0.00	< 0.200		0.780	0.800	97.4	60.0	120
Azoxystrobin	0.00	< 0.100		0.391	0.400	97.7	60.0	120
Bifenazate	0.00	< 0.100		0.382	0.400	95.4	60.0	120
Bifenthrin	0.00	< 0.100		0.395	0.400	98.8	50.0	150
Boscalid	0.00	< 0.200		0.744	0.800	92.9	60.0	120
Carbaryl	0.00	< 0.100		0.396	0.400	98.9	60.0	120
Carbendazim	0.00	< 0.100		0.388	0.400	97.0	60.0	120
Chlorantraniliprole	0.00	< 0.100		0.372	0.400	92.9	60.0	120
Chlorfenapyr	0.00	< 0.500		1.716	2.000	85.8	60.0	120
Chlorpyrifos	0.00	< 0.100		0.374	0.400	93.5	60.0	120
Clofentezine	0.00	< 0.100		0.392	0.400	98.0	60.0	120
Cyfluthrin	0.00	< 0.500		1.809	2.000	90.4	50.0	150
Cypermethrin	0.00	< 0.500		1.892	2.000	94.6	50.0	150
Daminozide	0.00	< 0.500		1.578	2.000	78.9	60.0	120
Diazinon	0.00	< 0.100		0.385	0.400	96.3	60.0	120
Dichlorvos	0.00	< 0.500		1.972	2.000	98.6	60.0	120
Dimethoate	0.00	< 0.100		0.387	0.400	96.7	60.0	120
Ethionphos	0.00	< 0.100		0.384	0.400	95.9	60.0	120
Etofenprox	0.00	< 0.200		0.809	0.800	101.1	50.0	150
Etoxazole	0.00	< 0.100		0.413	0.400	103.2	60.0	120
Fenoxycarb	0.00	< 0.100		0.383	0.400	95.7	60.0	120
Fenpyroximate	0.00	< 0.200		0.774	0.800	96.7	60.0	120
Fipronil	0.00	< 0.200		0.765	0.800	95.6	60.0	120
Fonicamid	0.00	< 0.250		1.042	1.000	104.2	60.0	120
Fludioxonil	0.00	< 0.200		0.777	0.800	97.1	50.0	150
Hexythiazox	0.00	< 0.250		0.913	1.000	91.3	60.0	120
Imazalil	0.00	< 0.100		0.389	0.400	92.3	60.0	120
Imidacloprid	0.00	< 0.200		0.792	0.800	99.1	60.0	120
Kiesoxim-methyl	0.00	< 0.200		0.755	0.800	94.4	60.0	120
Malathion	0.00	< 0.100		0.385	0.400	96.3	60.0	120
Metaxyl	0.00	< 0.100		0.374	0.400	93.5	60.0	120
Methiocarb	0.00	< 0.100		0.374	0.400	93.6	60.0	120
Methomyl	0.00	< 0.200		0.837	0.800	104.6	60.0	120
MCK-264	0.00	< 0.100		0.374	0.400	93.5	50.0	150
Mydobutanol	0.00	< 0.100		0.390	0.400	97.4	60.0	120
Naled	0.00	< 0.250		0.953	1.000	95.3	50.0	150
Oxaryl	0.00	< 0.500		2.049	2.000	102.5	60.0	120
Padobutrazole	0.00	< 0.200		0.793	0.800	99.2	60.0	120
Parathion-Methyl	0.00	< 0.200		0.787	0.800	98.4	50.0	150
Permethrin	0.00	< 0.100		0.381	0.400	95.2	50.0	150
Phosmet	0.00	< 0.100		0.384	0.400	96.0	50.0	150
Piperonyl butoxide	0.00	< 0.500		1.964	2.000	98.2	60.0	120
Prallethrin	0.00	< 0.100		0.387	0.400	96.7	60.0	120
Propiconazole	0.00	< 0.200		0.773	0.800	96.6	60.0	120
Propoxur	0.00	< 0.100		0.400	0.400	99.9	60.0	120
Pyrethrin (Summe)	0.00	< 0.100		0.394	0.413	95.5	60.0	120
Pyridaben	0.00	< 0.100		0.386	0.400	96.5	50.0	150
Spinosad	0.00	< 0.100		0.390	0.388	100.6	50.0	150
Spiromesfen	0.00	< 0.100		0.372	0.400	93.0	60.0	120
Spirotetramat	0.00	< 0.100		0.372	0.400	92.9	60.0	120
Spiroxamine	0.00	< 0.200		0.810	0.800	101.3	60.0	120
Tebuconazole	0.00	< 0.200		0.780	0.800	97.6	60.0	120
Thiadoprid	0.00	< 0.100		0.393	0.400	98.4	60.0	120
Thiamethoxam	0.00	< 0.100		0.410	0.400	102.5	60.0	120
Trifloxystrobin	0.00	< 0.100		0.392	0.400	98.1	60.0	120



12423 NE Whitaker Way
 Portland, OR 97230
 503-254-1794



Report Number: 22-006362/D004.R000
 Report Date: 06/14/2022
 ORELAP#: OR100028
 Purchase Order:
 Received: 06/01/22 16:49

Revision: 3 Document ID: 3120
 LegacyID: CFLC21WorksheetValidated 10/30/2020

Laboratory Pesticide Quality Control Results

AOAC2007.1 & EN 15662		Units: mg/Kg				Batch ID: 2204951				
Matrix Spke/Matrix Spke Duplicate Recoveries	Result	M5 Res	M5D Res	Spike	RFD%	Limit	MS% Re	M5D% Re	Limits	Notes
Abamectin	0.00	0.811	0.802	1.00	1.2%	< 30	81.1%	80.2%	50 - 150	
Acephate	0.051	0.954	0.946	1.00	0.9%	< 30	90.4%	89.6%	50 - 150	
Acequinocyl	0.00	4.486	3.871	4.00	14.7%	< 30	112.1%	96.8%	50 - 150	
Acetamiprid	0.00	0.392	0.388	0.40	1.1%	< 30	98.1%	97.1%	50 - 150	
Aldicarb	0.00	0.794	0.797	0.80	0.3%	< 30	99.3%	99.6%	50 - 150	
Azoxystrobin	0.00	0.380	0.399	0.40	5.0%	< 30	94.9%	99.7%	50 - 150	
Bifenazate	0.00	0.412	0.427	0.40	3.6%	< 30	103.0%	106.8%	50 - 150	
Bifenthrin	0.00	0.421	0.400	0.40	5.1%	< 30	105.1%	99.9%	50 - 150	
Boscalid	0.00	0.726	0.710	0.80	2.2%	< 30	90.7%	88.7%	50 - 150	
Carbaryl	0.00	0.392	0.396	0.40	1.0%	< 30	98.0%	98.9%	50 - 150	
Carbendazim	0.00	0.387	0.403	0.40	4.0%	< 30	96.8%	100.8%	50 - 150	
Chlorantraniliprole	0.00	0.398	0.380	0.40	4.8%	< 30	99.8%	94.9%	50 - 150	
Chlorfenapyr	0.029	1.375	1.575	2.00	13.8%	< 30	67.3%	77.3%	50 - 150	
Chlorpyrifos	0.00	0.378	0.371	0.40	2.1%	< 30	94.6%	92.6%	50 - 150	
Clofentezine	0.00	0.388	0.390	0.40	0.5%	< 30	96.9%	97.4%	50 - 150	
Cyfluthrin	0.00	0.224	0.230	2.00	2.5%	< 30	11.2%	11.3%	30 - 150	Q
Cypermethrin	0.00	1.002	0.905	2.00	10.1%	< 30	50.1%	45.3%	50 - 150	Q
Daminozide	0.00	1.626	1.551	2.00	4.8%	< 30	81.3%	77.5%	30 - 150	
Diazinon	0.00	0.395	0.407	0.40	3.1%	< 30	98.8%	101.8%	50 - 150	
Dichlorvos	0.00	2.667	2.629	2.00	1.4%	< 30	133.4%	131.5%	50 - 150	
Dimethoate	0.00	0.390	0.389	0.40	0.1%	< 30	97.4%	97.3%	50 - 150	
Ethionphos	0.00	0.381	0.381	0.40	0.0%	< 30	95.2%	95.2%	50 - 150	
Etofenprox	0.00	0.915	0.898	0.80	1.8%	< 30	114.3%	112.3%	50 - 150	
Etoxazole	0.00	0.419	0.441	0.40	4.9%	< 30	104.9%	110.2%	50 - 150	
Fenoxycarb	0.00	0.396	0.401	0.40	1.2%	< 30	99.0%	100.2%	50 - 150	
Fenpyroximate	0.00	0.951	0.967	0.80	1.7%	< 30	118.9%	120.9%	50 - 150	
Fipronil	0.00	0.773	0.791	0.80	2.3%	< 30	96.6%	98.8%	50 - 150	
Fonicamid	0.00	1.077	1.124	1.00	4.3%	< 30	107.7%	112.4%	50 - 150	
Fludioxonil	0.00	0.774	0.790	0.80	2.0%	< 30	96.8%	98.7%	50 - 150	
Hexythiazox	0.00	1.091	1.040	1.00	4.8%	< 30	109.1%	104.0%	50 - 150	
Imazalil	0.00	0.390	0.383	0.40	1.9%	< 30	97.9%	95.7%	50 - 150	
Imidacloprid	0.00	0.815	0.788	0.80	3.4%	< 30	101.9%	98.9%	50 - 150	
Kiesoxim-methyl	0.00	0.763	0.752	0.80	1.4%	< 30	95.4%	94.1%	50 - 150	
Malathion	0.00	0.388	0.395	0.40	3.1%	< 30	95.7%	98.7%	50 - 150	
Metaxyl	0.00	0.374	0.379	0.40	1.3%	< 30	93.8%	94.8%	50 - 150	
Methiocarb	0.00	0.374	0.388	0.40	3.8%	< 30	93.4%	97.0%	50 - 150	
Methomyl	0.00	0.817	0.846	0.80	3.4%	< 30	102.2%	105.7%	50 - 150	
MCK-264	0.00	0.380	0.403	0.40	11.5%	< 30	89.9%	100.9%	50 - 150	
Mydobutani	0.00	0.390	0.409	0.40	4.7%	< 30	97.4%	102.1%	50 - 150	
Naled	0.00	FALSE	FALSE	1.00	NA	< 30	0.0%	0.0%	50 - 150	R1, Q
Oxaryl	0.00	2.073	2.183	2.00	5.2%	< 30	103.7%	109.1%	50 - 150	
Padobutrazole	0.00	0.813	0.815	0.80	0.2%	< 30	101.7%	101.8%	50 - 150	
Parathion-Methyl	0.015	0.823	0.705	0.80	15.7%	< 30	100.9%	86.2%	30 - 150	
Permethrin	0.00	0.420	0.418	0.40	0.5%	< 30	105.0%	104.5%	50 - 150	
Phosmet	0.00	0.376	0.388	0.40	3.0%	< 30	94.0%	96.9%	50 - 150	
Piperonyl butoxide	0.00	2.049	1.992	2.00	2.8%	< 30	102.5%	99.6%	50 - 150	
Prallethrin	0.00	0.356	0.360	0.40	1.1%	< 30	89.1%	90.1%	50 - 150	
Propiconazole	0.00	0.751	0.791	0.80	5.2%	< 30	93.9%	98.8%	50 - 150	
Propoxur	0.00	0.394	0.392	0.40	0.6%	< 30	98.8%	98.0%	50 - 150	
Pyrethrin (Summe)	0.004	0.266	0.284	0.413	6.8%	< 30	63.3%	67.8%	50 - 150	
Pyridaben	0.00	0.434	0.419	0.40	3.5%	< 30	108.6%	104.8%	50 - 150	
Spinosad	0.00	0.377	0.381	0.388	1.0%	< 30	97.2%	98.2%	50 - 150	
Spiromesfen	0.00	0.397	0.393	0.40	1.2%	< 30	99.4%	98.2%	50 - 150	
Spirotetramat	0.00	0.369	0.366	0.40	0.8%	< 30	92.4%	91.6%	50 - 150	
Spiroxamine	0.00	0.809	0.820	0.80	1.4%	< 30	101.1%	102.5%	50 - 150	
Tebuconazole	0.00	0.746	0.771	0.80	3.4%	< 30	93.2%	96.3%	50 - 150	
Thiadoprid	0.00	0.391	0.391	0.40	0.1%	< 30	97.8%	97.7%	50 - 150	
Thiamethoxam	0.00	0.397	0.415	0.40	4.6%	< 30	99.2%	103.8%	50 - 150	
Trifloxystrobin	0.00	0.396	0.382	0.40	3.6%	< 30	98.9%	95.4%	50 - 150	



12423 NE Whitaker Way
 Portland, OR 97230
 503-254-1794

Report Number: 22-006362/D004.R000
 Report Date: 06/14/2022
 ORELAP#: OR100028
 Purchase Order:
 Received: 06/01/22 16:49



Revision: Document ID:
 Legacy ID: Effective:

Laboratory Quality Control Results

Residual Solvents				Batch D: 2204986						
Method Blank				Laboratory Control Sample						
Analyte	Result	LOQ	Notes	Result	Spike	Units	% Rec	Limits	Notes	
Propane	ND	< 200		560	572	µg/g	97.9	60 - 120		
Isobutane	ND	< 200		718	731	µg/g	98.2	60 - 120		
Butane	ND	< 200		692	731	µg/g	94.7	60 - 120		
2,2-Dimethylpropane	ND	< 200		958	938	µg/g	102.4	60 - 120		
Methanol	ND	< 200		1570	1650	µg/g	95.2	60 - 120		
Ethylene Oxide	ND	< 30		57.7	56.2	µg/g	102.7	60 - 120		
2-Methylbutane	ND	< 200		1540	1620	µg/g	95.1	60 - 120		
Pentane	ND	< 200		1550	1610	µg/g	96.3	60 - 120		
Ethanol	ND	< 200		1520	1620	µg/g	93.8	70 - 130		
Ethyl Ether	ND	< 200		1540	1600	µg/g	96.3	60 - 120		
2,2-Dimethylbutane	ND	< 30		157	167	µg/g	94.0	60 - 120		
Acetone	ND	< 200		1550	1620	µg/g	95.7	60 - 120		
2-Propanol	ND	< 200		1520	1610	µg/g	94.4	60 - 120		
Ethyl Formate	ND	< 500		1420	1600	µg/g	88.8	70 - 130		
Acetonitrile	ND	< 100		607	635	µg/g	95.6	60 - 120		
Methyl Acetate	ND	< 500		1630	1610	µg/g	101.2	70 - 130		
2,3-Dimethylbutane	ND	< 30		142	177	µg/g	80.2	60 - 120		
Dichloromethane	ND	< 60		500	498	µg/g	100.4	60 - 120		
2-Methylpentane	ND	< 30		150	166	µg/g	90.4	60 - 120		
MTBE	ND	< 500		1590	1600	µg/g	99.4	70 - 130		
3-Methylpentane	ND	< 30		168	175	µg/g	96.0	60 - 120		
Hexane	ND	< 30		167	174	µg/g	96.0	60 - 120		
1-Propanol	ND	< 500		1540	1610	µg/g	95.7	70 - 130		
Methylethylketone	ND	< 500		1630	1600	µg/g	101.9	70 - 130		
Ethyl acetate	ND	< 200		1530	1610	µg/g	95.0	60 - 120		
2-Butanol	ND	< 200		1500	1620	µg/g	92.6	60 - 120		
Tetrahydrofuran	ND	< 100		476	507	µg/g	93.9	60 - 120		
Cyclohexane	ND	< 200		1500	1610	µg/g	93.2	60 - 120		
2-methyl-1-propanol	ND	< 500		1430	1620	µg/g	88.3	70 - 130		
Benzene	ND	< 1		4.67	5.22	µg/g	89.5	60 - 120		
Isopropyl Acetate	ND	< 200		1520	1610	µg/g	94.4	60 - 120		
Heptane	ND	< 200		1520	1610	µg/g	94.4	60 - 120		
1-Butanol	ND	< 500		1480	1600	µg/g	92.5	70 - 130		
Propyl Acetate	ND	< 500		1600	1600	µg/g	100.0	70 - 130		
1,4-Dioxane	ND	< 100		466	508	µg/g	91.7	60 - 120		
2-Ethoxyethanol	ND	< 30		158	165	µg/g	95.8	60 - 120		
Methylisobutylketone	ND	< 500		1510	1610	µg/g	93.8	70 - 130		
3-Methyl-1-butanol	ND	< 500		1470	1610	µg/g	91.9	70 - 130		
Ethylene Glycol	ND	< 200		398	492	µg/g	80.5	60 - 120		
Toluene	ND	< 100		463	497	µg/g	93.2	60 - 120		
Isobutyl Acetate	ND	< 500		1570	1600	µg/g	98.1	70 - 130		
1-Pentanol	ND	< 500		1420	1610	µg/g	88.2	70 - 130		
Butyl Acetate	ND	< 500		1460	1610	µg/g	90.7	70 - 130		
Ethylbenzene	ND	< 200		904	980	µg/g	92.2	60 - 120		
m,p-Xylene	ND	< 200		900	985	µg/g	91.4	60 - 120		
o-Xylene	ND	< 200		868	965	µg/g	89.9	60 - 120		
Cumene	ND	< 30		152	168	µg/g	90.5	60 - 120		
Anisole	ND	< 500		1440	1610	µg/g	89.4	70 - 130		
DMSO	ND	< 500		1590	1630	µg/g	97.5	70 - 130		
1,2-dimethoxyethane	ND	< 50		168	164	µg/g	102.4	70 - 130		
Triethylamine	ND	< 500		1310	1600	µg/g	81.9	70 - 130		
N,N-dimethylformamide	ND	< 150		452	497	µg/g	90.9	70 - 130		
N,N-dimethylacetamide	ND	< 150		481	498	µg/g	96.6	70 - 130		
Pyridine	ND	< 50		170	180	µg/g	94.4	70 - 130		
1,2-Dichloroethane	ND	< 1		1.05	1	µg/g	105.0	70 - 130		
Chloroform	ND	< 1		0.99	1	µg/g	99.0	70 - 130		
Trichloroethylene	ND	< 1		1	1	µg/g	100.0	70 - 130		



12423 NE Whitaker Way
Portland, OR 97230
503-254-1794



Report Number: 22-006362/D004.R000
Report Date: 06/14/2022
ORELAP#: OR100028
Purchase Order:
Received: 06/01/22 16:49

Revision: Document ID:
Legacy ID: Effective:

QC- Sample Duplicate		Sample ID: 22-006554-0001						
Analyte	Result	Org. Result	LOQ Units	RPD	Limits	Accept/ Fail	Notes	
Propane	ND	ND	200 µg/g	0.0	< 20	Acceptable		
Isobutane	ND	ND	200 µg/g	0.0	< 20	Acceptable		
Butane	ND	ND	200 µg/g	0.0	< 20	Acceptable		
2,2-Dimethylpropane	ND	ND	200 µg/g	0.0	< 20	Acceptable		
Methanol	ND	ND	200 µg/g	0.0	< 20	Acceptable		
Ethylene Oxide	ND	ND	30 µg/g	0.0	< 20	Acceptable		
2-Methylbutane	ND	ND	200 µg/g	0.0	< 20	Acceptable		
Pentane	ND	ND	200 µg/g	0.0	< 20	Acceptable		
Ethanol	ND	ND	200 µg/g	0.0	< 20	Acceptable		
Ethyl Ether	ND	ND	200 µg/g	0.0	< 20	Acceptable		
2,2-Dimethylbutane	ND	ND	30 µg/g	0.0	< 20	Acceptable		
Acetone	ND	ND	200 µg/g	0.0	< 20	Acceptable		
2-Propanol	ND	ND	200 µg/g	0.0	< 20	Acceptable		
Ethyl Formate	ND	ND	500 µg/g	0.0	< 20	Acceptable		
Acetonitrile	ND	ND	100 µg/g	0.0	< 20	Acceptable		
Methyl Acetate	ND	ND	500 µg/g	0.0	< 20	Acceptable		
2,3-Dimethylbutane	ND	ND	30 µg/g	0.0	< 20	Acceptable		
Dichloromethane	ND	ND	60 µg/g	0.0	< 20	Acceptable		
2-Methylpentane	ND	ND	30 µg/g	0.0	< 20	Acceptable		
MTBE	ND	ND	500 µg/g	0.0	< 20	Acceptable		
3-Methylpentane	ND	ND	30 µg/g	0.0	< 20	Acceptable		
Hexane	ND	ND	30 µg/g	0.0	< 20	Acceptable		
1-Propanol	ND	ND	500 µg/g	0.0	< 20	Acceptable		
Methylethylketone	ND	ND	500 µg/g	0.0	< 20	Acceptable		
Ethyl acetate	ND	ND	200 µg/g	0.0	< 20	Acceptable		
2-Butanol	ND	ND	200 µg/g	0.0	< 20	Acceptable		
Tetrahydrofuran	ND	ND	100 µg/g	0.0	< 20	Acceptable		
Cyclohexane	ND	ND	200 µg/g	0.0	< 20	Acceptable		
2-methyl-1-propanol	ND	ND	500 µg/g	0.0	< 20	Acceptable		
Benzene	ND	ND	1 µg/g	0.0	< 20	Acceptable		
Isopropyl Acetate	ND	ND	200 µg/g	0.0	< 20	Acceptable		
Heptane	ND	ND	200 µg/g	0.0	< 20	Acceptable		
1-Butanol	ND	ND	500 µg/g	0.0	< 20	Acceptable		
Propyl Acetate	ND	ND	500 µg/g	0.0	< 20	Acceptable		
1,4-Dioxane	ND	ND	100 µg/g	0.0	< 20	Acceptable		
2-Ethoxyethanol	ND	ND	30 µg/g	0.0	< 20	Acceptable		
Methylisobutylketone	ND	ND	500 µg/g	0.0	< 20	Acceptable		
3-Methyl-1-butanol	ND	ND	500 µg/g	0.0	< 20	Acceptable		
Ethylene Glycol	ND	ND	200 µg/g	0.0	< 20	Acceptable		
Toluene	ND	ND	100 µg/g	0.0	< 20	Acceptable		
Isobutyl Acetate	ND	ND	500 µg/g	0.0	< 20	Acceptable		
1-Pentanol	ND	ND	500 µg/g	0.0	< 20	Acceptable		
Butyl Acetate	ND	ND	500 µg/g	0.0	< 20	Acceptable		
Ethylbenzene	ND	ND	200 µg/g	0.0	< 20	Acceptable		
m,p-Xylene	ND	ND	200 µg/g	0.0	< 20	Acceptable		
o-Xylene	ND	ND	200 µg/g	0.0	< 20	Acceptable		
Cumene	ND	ND	30 µg/g	0.0	< 20	Acceptable		
Anisole	ND	ND	500 µg/g	0.0	< 20	Acceptable		
DMSO	ND	ND	500 µg/g	0.0	< 20	Acceptable		
1,2-dimethoxyethane	ND	ND	50 µg/g	0.0	< 20	Acceptable		
Triethylamine	ND	ND	500 µg/g	0.0	< 20	Acceptable		
N,N-dimethylformamide	ND	ND	150 µg/g	0.0	< 20	Acceptable		
N,N-dimethylacetamide	ND	ND	150 µg/g	0.0	< 20	Acceptable		
Pyridine	ND	ND	50 µg/g	0.0	< 20	Acceptable		
1,2-Dichloroethane	ND	ND	1 µg/g	0.0	< 20	Acceptable		
Chloroform	ND	ND	1 µg/g	0.0	< 20	Acceptable		
Trichloroethylene	ND	ND	1 µg/g	0.0	< 20	Acceptable		

Abbreviations

ND - None Detected at or above MRL
RPD - Relative Percent Difference
LOQ - Limit of Quantitation

Units of Measure:

µg/g - Microgram per gram or ppm



12423 NE Whitaker Way
 Portland, OR 97230
 503-254-1794



Report Number: 22-006362/D004.R000
Report Date: 06/14/2022
ORELAP#: OR100028
Purchase Order:
Received: 06/01/22 16:49

Revision: 1 Document ID: 7086
 Legacy ID: CFL-E57Worksheet Validated 11/04/2020

Terpenes Quality Control Results

Method Reference: EPA5035				Batch ID: 2205013					
Method Blank				Laboratory Control Sample					
Analyte	Result	LCQ	Notes	Result	LCS	Units	LCS% Rec	Limits	Notes
a-pinene	<LOQ	< 200		577	650	µg/g	89%	70 - 130	
Camphene	<LOQ	< 200		463	500	µg/g	93%	70 - 130	
Sabinene	<LOQ	< 200		594	650	µg/g	91%	70 - 130	
b-Pinene	<LOQ	< 200		591	650	µg/g	91%	70 - 130	
b-Myrcene	<LOQ	< 200		449	500	µg/g	90%	70 - 130	
a-phellandrene	<LOQ	< 200		405	500	µg/g	81%	70 - 130	
d-3-Carene	<LOQ	< 200		432	500	µg/g	86%	70 - 130	
a-Terpinene	<LOQ	< 200		580	650	µg/g	89%	70 - 130	
p-Cymene	<LOQ	< 200		454	500	µg/g	91%	70 - 130	
D-Limonene	<LOQ	< 200		586	650	µg/g	90%	70 - 130	
Eucalyptol	<LOQ	< 200		460	500	µg/g	92%	70 - 130	
b-cis-Cimene	<LOQ	< 67		128	167	µg/g	77%	70 - 130	
b-trans-Cimene	<LOQ	< 133		277	333	µg/g	83%	70 - 130	
g-Terpinene	<LOQ	< 200		602	650	µg/g	93%	70 - 130	
Sabinene Hydrate	<LOQ	< 200		555	650	µg/g	85%	70 - 130	
Terpinolene	<LOQ	< 200		588	650	µg/g	90%	70 - 130	
D-Fenchone	<LOQ	< 200		572	650	µg/g	88%	70 - 130	
Linalool	<LOQ	< 200		492	500	µg/g	98%	70 - 130	
Fenchol	<LOQ	< 200		638	650	µg/g	98%	70 - 130	
Camphor	<LOQ	< 200		452	500	µg/g	90%	70 - 130	
Isopulego	<LOQ	< 200		441	500	µg/g	88%	70 - 130	
Isoborneol	<LOQ	< 200		443	500	µg/g	89%	70 - 130	
Borneol	<LOQ	< 200		639	650	µg/g	98%	70 - 130	
DL-Menthol	<LOQ	< 200		472	500	µg/g	94%	70 - 130	
Terpineol	<LOQ	< 200		634	650	µg/g	98%	70 - 130	
Nerd	<LOQ	< 200		439	500	µg/g	88%	70 - 130	
Pulegone	<LOQ	< 200		641	650	µg/g	99%	70 - 130	
Geraniol	697	< 200		655	650	µg/g	101%	70 - 130	
Geranyl Acetate	<LOQ	< 200		449	500	µg/g	90%	70 - 130	
a-Cedrene	<LOQ	< 200		673	650	µg/g	104%	70 - 130	
b-Caryophyllene	<LOQ	< 200		462	500	µg/g	92%	70 - 130	
a-Humulene	<LOQ	< 200		674	650	µg/g	104%	70 - 130	
Vaenene	<LOQ	< 200		463	500	µg/g	93%	70 - 130	
cis-Nerolidol	<LOQ	< 200		484	500	µg/g	97%	70 - 130	
a-Farnesene	<LOQ	< 200		480	500	µg/g	96%	70 - 130	
trans-Nerolidol	<LOQ	< 200		664	650	µg/g	102%	70 - 130	
Caryophyllene_Oxide	<LOQ	< 200		499	500	µg/g	100%	70 - 130	
Quaiol	<LOQ	< 200		679	650	µg/g	105%	70 - 130	
Cedrol	<LOQ	< 200		476	500	µg/g	95%	70 - 130	
a-Bisabolol	<LOQ	< 200		476	500	µg/g	95%	70 - 130	

Definitions

LCQ	Limit of Quantitation
LCS	Laboratory Control Sample
%REC	Percent Recovery



12423 NE Whitaker Way
 Portland, OR 97230
 503-254-1794



Report Number: 22-006362/D004.R000
Report Date: 06/14/2022
ORELAP#: OR100028
Purchase Order:
Received: 06/01/22 16:49

Revision: 1 Document ID: 7086
 Legacy ID: CFL-E57Worksheet Validated 11/04/2020

Terpenes Quality Control Results

Method Reference: EPA5035		Batch ID: 2205013					
Sample/ Sample Duplicate		Sample ID: 22-006554-001					
Analyte	Result	Org. Result	LOQ	Units	% RPD	LIMIT	Notes
a-pinene	<LOQ	<LOQ	200	µg/g	0%	< 20	
Camphene	<LOQ	<LOQ	200	µg/g	0%	< 20	
Sabinene	<LOQ	<LOQ	200	µg/g	0%	< 20	
b-Pinene	<LOQ	<LOQ	200	µg/g	0%	< 20	
b-Myrcene	<LOQ	<LOQ	200	µg/g	0%	< 20	
a-phellandrene	<LOQ	<LOQ	200	µg/g	0%	< 20	
d-3-Carene	<LOQ	<LOQ	200	µg/g	0%	< 20	
a-Terpinene	<LOQ	<LOQ	200	µg/g	0%	< 20	
p-Cymene	<LOQ	<LOQ	200	µg/g	0%	< 20	
D-Limonene	<LOQ	<LOQ	200	µg/g	0%	< 20	
Eucalyptol	<LOQ	<LOQ	200	µg/g	0%	< 20	
b-cis-Cimene	<LOQ	<LOQ	66.6	µg/g	0%	< 20	
b-trans-Cimene	<LOQ	<LOQ	133	µg/g	0%	< 20	
g- erpinene	<LOQ	<LOQ	200	µg/g	0%	< 20	
Sabinene Hydrate	<LOQ	<LOQ	200	µg/g	0%	< 20	
Terpinolene	<LOQ	<LOQ	200	µg/g	0%	< 20	
D-Fenchone	<LOQ	<LOQ	200	µg/g	0%	< 20	
Linalool	<LOQ	<LOQ	200	µg/g	0%	< 20	
Fenchol	<LOQ	<LOQ	200	µg/g	0%	< 20	
Camphor	<LOQ	<LOQ	200	µg/g	0%	< 20	
Isopulego	<LOQ	<LOQ	200	µg/g	0%	< 20	
Isoborneol	<LOQ	<LOQ	200	µg/g	0%	< 20	
Borneol	<LOQ	<LOQ	200	µg/g	0%	< 20	
DL-Menthol	<LOQ	<LOQ	200	µg/g	0%	< 20	
Terpineol	<LOQ	<LOQ	200	µg/g	0%	< 20	
Nerd	<LOQ	<LOQ	200	µg/g	0%	< 20	
Pulegone	<LOQ	<LOQ	200	µg/g	0%	< 20	
Geraniol	<LOQ	<LOQ	200	µg/g	0%	< 20	
Geranyl Acetate	<LOQ	<LOQ	200	µg/g	0%	< 20	
a-Cedrene	<LOQ	<LOQ	200	µg/g	0%	< 20	
b-Caryophyllene	1930	1920	200	µg/g	1%	< 20	
a-Humulene	1010	1020	200	µg/g	1%	< 20	
Valnene	<LOQ	<LOQ	200	µg/g	0%	< 20	
cis-Nerolidol	<LOQ	<LOQ	200	µg/g	0%	< 20	
a-Farnesene	<LOQ	<LOQ	200	µg/g	0%	< 20	
trans-Nerolidol	393	376	200	µg/g	4%	< 20	
Caryophyllene Oxide	225	230	200	µg/g	2%	< 20	
Quaiol	6840	6800	200	µg/g	1%	< 20	
Cedrol	<LOQ	<LOQ	200	µg/g	0%	< 20	
a-Bisabolol	7600	7580	200	µg/g	0%	< 20	

Definitions

RPD Relative Percent Difference



12423 NE Whitaker Way
Portland, OR 97230
503-254-1794



Report Number: 22-006362/D004.R000
Report Date: 06/14/2022
ORELAP#: OR100028
Purchase Order:
Received: 06/01/22 16:49





Explanation of QC Flag Comments:

Code	Explanation
Q	Matrix interferences affecting spike or surrogate recoveries.
Q1	Quality control result biased high. Only non-detect samples reported.
Q2	Quality control outside QC limits. Data considered estimate.
Q3	Sample concentration greater than four times the amount spiked.
Q4	Non-homogenous sample matrix, affecting RPD result and/or % recoveries.
Q5	Spike results above calibration curve.
Q6	Quality control outside QC limits. Data acceptable based on remaining QC.
R	Relative percent difference (RPD) outside control limit.
R1	RPD non-calculable, as sample or duplicate results are less than five times the LOQ.
R2	Sample replicates RPD non-calculable, as only one replicate is within the analytical range.
LOQ1	Quantitation level raised due to low sample volume and/or dilution.
LOQ2	Quantitation level raised due to matrix interference.
B	Analyte detected in method blank, but not in associated samples.
B1	The sample concentration is greater than 5 times the blank concentration.
B2	The sample concentration is less than 5 times the blank concentration.